



Griffco Valve Inc.
6010 N. Bailey Ave., Suite 1B
Amherst, NY 14226
Phone: 1 716 835-0891
Fax: 1 716 835-0893

HIGH FLOW SERIES BACK PRESSURE VALVES

Features:

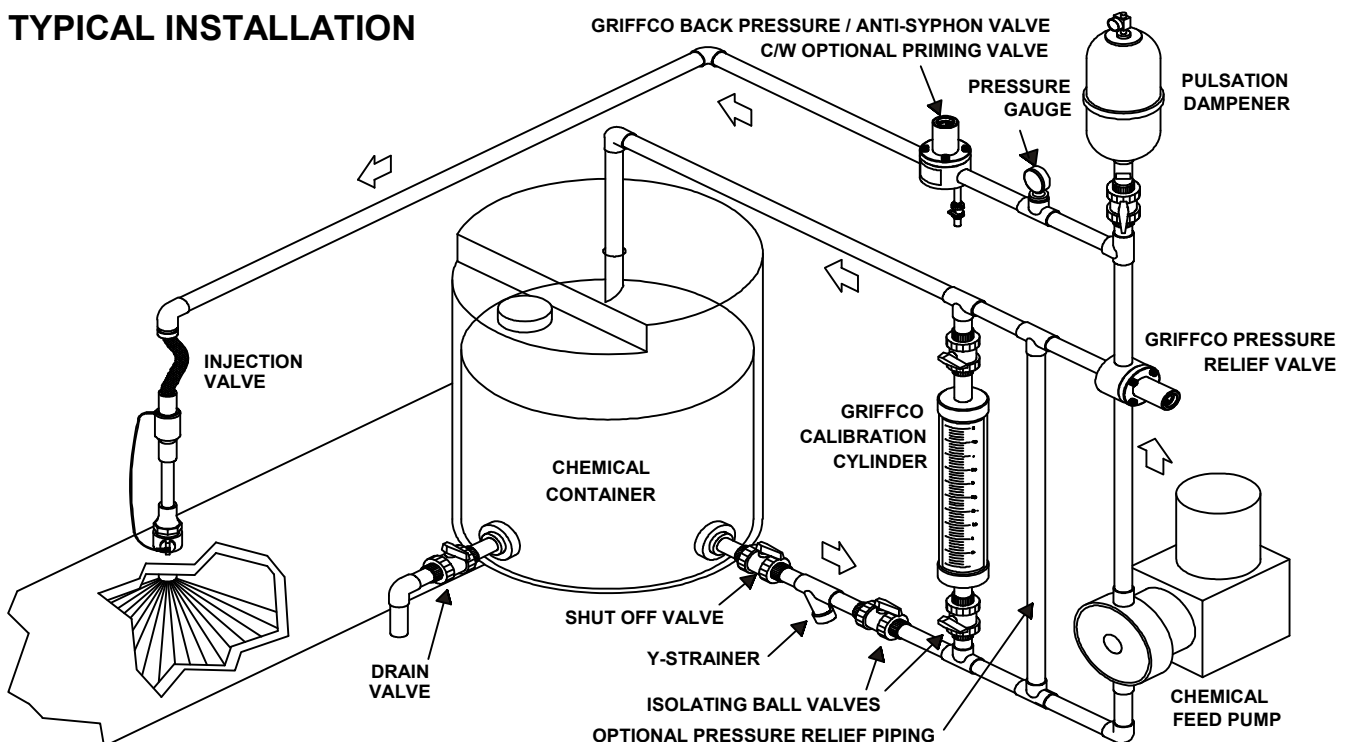
- NEW Molded Noryl Top
- High Reliability / Low Cost
- Molded PTFE/EPDM Diaphragm
- Adjustable 1 – 10 Bar
- Optional Pressure Rated Valves
- Anti-Siphon Function
- Robust, Machined Construction
- Tamper Resistant Adjustment Screw
- Wide Range of Materials
- ISO 9001 Certified

Operation:

Griffco diaphragm back pressure valves apply positive discharge pressure to a metering pump system to prevent siphoning and eliminate varying dosage rates caused by fluctuating downstream pressure. The diaphragm is held against the valve seat by an internal spring. When the preset pressure is exceeded, the diaphragm is forced up and chemical flows through the valve to the injection point. The valves are preset for 3.5 bar, however they are field adjustable from 1 – 10 bar via the adjustment screw. Installation should be as close to the injection point as possible to prevent chemical line drainage and it is most important that all chemical system equipment such as pulsation dampeners and pressure gauges are between the pump and back pressure valve.

Griffco high flow diaphragm back pressure valves are designed to enhance the performance of higher flow, continuous feed pumps that require a constant head pressure, while also acting as an anti-syphon valve. Larger orifice sizes make the valve ideal for use with higher viscosity fluids. Wetted materials include: **PVC, CPVC, PP, PVDF, PTFE, 316 SS, A 20 and Hast. C.** Available in DN15, DN20, DN25.

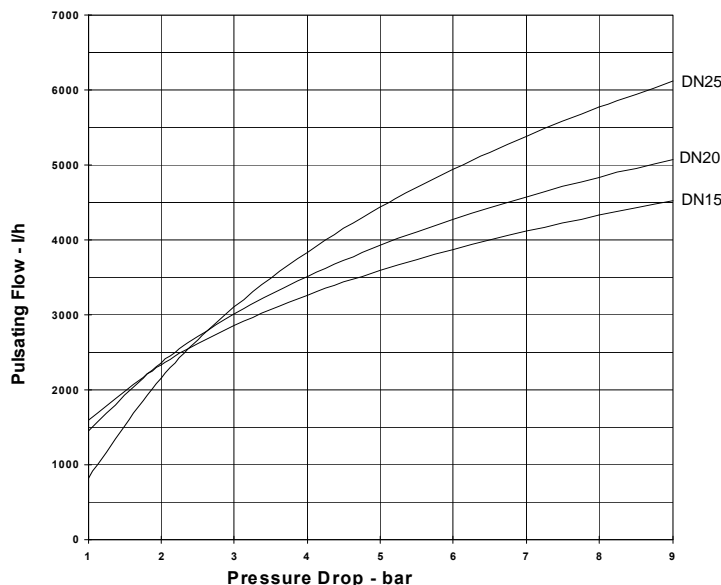
TYPICAL INSTALLATION



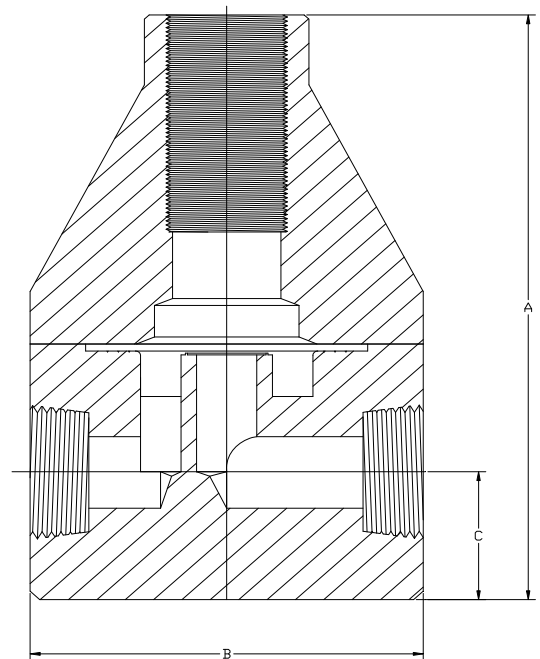
Technical Data:

Model BPHF Sizes: (DN)			15, 20, 25		
Connections:			ISO Thread, Socket, Union, & Flange		
Pressure Adjustment			Standard: 1–10 bar, Optional: 0–3.5 bar, 1–17 bar		
Flow Rates (Q) @ 10 bar			Shipping Weight: kgs		
Size	Pulsating	Continuous	Plastic	Metal / Plastic Top	Metal / Metal Top
DN 15	2271 l/h	6813 l/hr	1.6	2.7	3.2
DN 20	2271 l/h	6813 l/hr	1.6	2.7	3.2
DN 25	3785 l/h	12.26 m ³ /h	3.2	6.5	10.4
Max Temperature: (°C)			PVC: 60° ; CPVC & PP: 90°; PTFE, PVDF, & Metal: 150° , (Peak 200°)		
Max Operating Pressure (bar) @ 21° C			Plastic/Noryl: 25 bar		Metal/Metal: 135 bar
Materials of Construction:					
Diaphragm			PTFE / EPDM, Optional: Viton, Hypalon, & PTFE / Viton		
Valve Top			Standard: Noryl (DN15 – DN25); Optional: SS		
Valve Body			PVC, CPVC, PP, PTFE, PVDF, Halar, 316 SS, A 20, Hast. C		

Performance Curve:



Dimensions:



Product Codes For Ordering:

BPHF ☐ ☐ ☐ ☐ ☐ ☐

1 2 3 4

1 = Size 2 = Material 3 = Spring Opt 4 = Options

050 – DN15	P - PVC	1 - 0 - 3.5 bar	V - Viton Diaphragm
075 – DN20	CP - CPVC	2 - 1 - 17 bar	S - Socket Connection
100 – DN25	PP - Polypro		F - Flange Connection
	T - PTFE		U - Union Connection
	K - PVDF		B - BSP Connections
	H - Halar		OSS - 316 SS Top
	S - 316 SS		AR – Priming Valve
	A - Alloy 20		
	C - Hastalloy C		

DIMENSIONS: BPHF-SERIES			
All Materials			
Size	A (cm)	B (cm)	C (cm)
DN15	14.12	8.90	2.860
DN20	14.12	8.90	2.860
DN25	18.42	12.45	3.175

For more detailed information visit us at www.griffcovalve.com

Email: sales@griffcovalve.com