



Griffco Valve Inc.
188 Creekside Dr.
Amherst, NY 14228
Phone: 1 716 835-0891
Fax: 1 716 835-0893

HIGH FLOW SERIES BACK PRESSURE VALVES

Features:

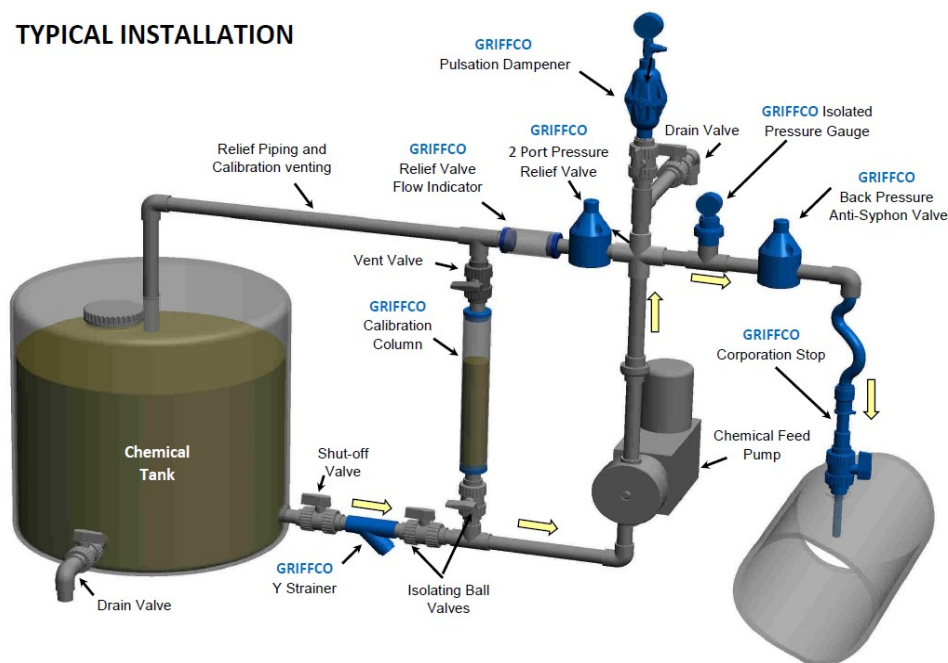
- High Reliability / Low Cost
- Large Orifice for High Viscosity Fluids
- Higher Flow / Lower Pressure Drop
- Adjustable 10 - 150 PSI
- Anti-Siphon Function
- Robust, Machined Construction
- Vulcanised PTFE/EPDM Diaphragm
- Wide Range of Materials

Operation:

Griffco diaphragm back pressure valves apply positive discharge pressure to any pump system to prevent siphoning and eliminate varying dosage rates caused by fluctuating downstream pressure. The diaphragm is held against the valve seat by an internal spring. When the preset pressure is exceeded, the diaphragm is forced up and chemical flows through the valve to the injection point. The valves are preset for 50 psi, however they are field adjustable from 10 - 150 psi via the adjustment screw. Installation should be as close to the injection point as possible to prevent chemical line drainage and it is most important that all chemical system equipment such as pulsation dampeners and pressure gauges are between the pump and back pressure valve.

Griffco high flow diaphragm back pressure valves are designed to enhance the performance of higher flow, continuous feed pumps that require a constant head pressure, while also acting as an anti-siphon valve. Larger orifice sizes make the valve ideal for use with higher viscosity fluids. Wetted materials include: **PVC, CPVC, PP, PVDF, PTFE, 316 SS, A 20 and Hast. C.** Available in 1/2" – 2" sizes.

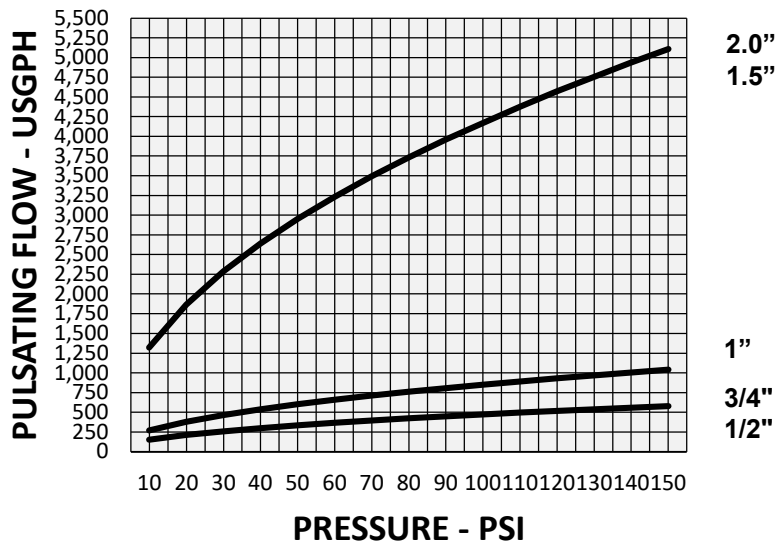
TYPICAL INSTALLATION



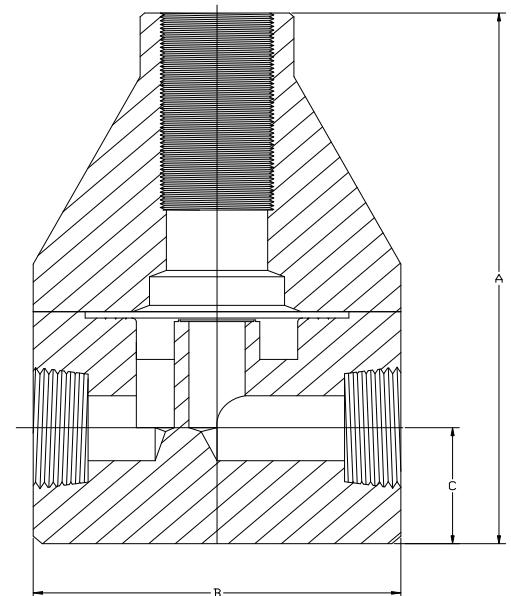
Technical Data:

Sizes: Model BPHF			1/2", 3/4", 1", 1 1/2" & 2"		
Connections:			NPT, Socket, Union & Flange		
Pressure Adjustment			Standard: 10 - 150 psi, Optional: 0 - 50 psi, 10 - 250 psi		
Flow Rates @ 150 psi			Shipping Weight: lbs		
Size	Pulsating	Continuous	Plastic	Metal / Plastic Top	Metal / Metal Top
1/2"	600 USgph	30 USgpm	3.5	6.0	7.0
3/4"	600 USgph	30 USgpm	3.5	6.0	7.0
1"	1000 USgph	54 USgpm	7.0	14.0	23.0
1 1/2"	5157 USgph	270 USgpm	10.00	35.00	45.00
2"	5157 USgph	270 USgpm	10.00	35.00	45.00
Max Temperature: (°F)			PVC: 140° ; CPVC & PP: 195°; PVDF, PTFE and all Metal: 300°, (Peak 390°)		
Materials of Construction:					
Diaphragm			PTFE / EPDM, Optional: Viton & PTFE / Viton		
Valve Top			Standard: Noryl Optional: 316 SS		
Valve Body			PVC, CPVC, PP, PTFE, PVDF, 316 SS, A 20, Hast. C, Others on Request		

Performance Curves



Dimensions:



Product Codes For Ordering:

BPHF ☐ ☐ ☐ ☐ ☐ ☐

1 **2** **3** **4**

1 = Size **2 = Material** **3 = Spring Opt** **4 = Options**

050 - 1/2" P - PVC Blank - 10 - 150 psi V - Viton Diaphragm
 075 - 3/4" CP - CPVC 1 - 0- 50 psi S - Socket Connection
 105 - 1" PP - Polypro 2 - 10 - 250 psi F - Flange Connection
 150 - 1 1/2" T - PTFE U - Union Connection
 200 - 2" K - PVDF B - BSP Connections
 H - Halar OSS - 316 SS Top
 S - 316 SS AR - Priming Valve
 A - Alloy 20
 C - Hastalloy C

DIMENSIONS: BPHF-SERIES			
All Materials			
Size	A (in)	B (in)	C (in)
1/2"	5.560	3.500	1.125
3/4"	5.560	3.500	1.125
1"	7.250	4.900	1.250
1 1/2"	9.850	5.950	2.150
2"	9.850	5.950	2.150

For more detailed information visit us at www.griffcovalve.com