



**Griffco Valve Inc.**  
 6010 N. Bailey Ave., Ste 1B  
 Amherst, NY 14226 USA  
 Phone: +1 716 835-0891  
 Fax: +1 716 835-0893  
[sales@griffcovalve.com](mailto:sales@griffcovalve.com)  
[www.griffcovalve.com](http://www.griffcovalve.com)

# M-SERIES PRESSURE RELIEF VALVES



## Features:

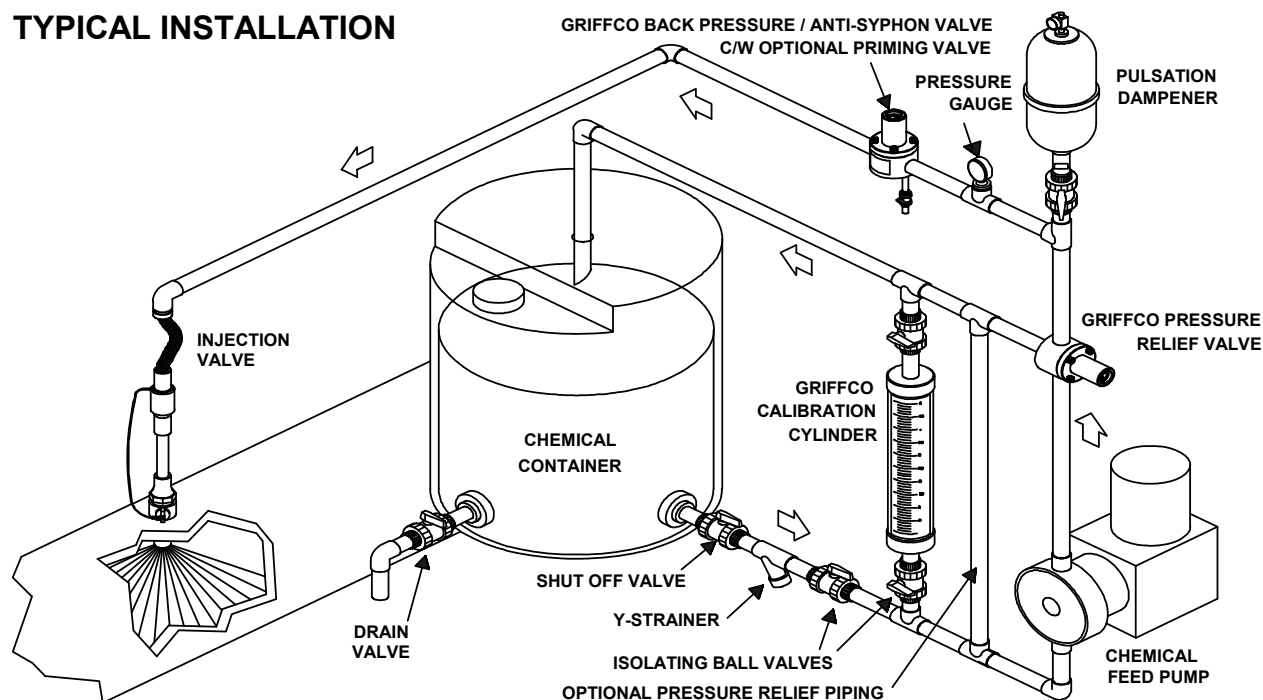
- Molded Noryl Top
- High Reliability / Low Cost
- Compact Size for OEM Applications
- Adjustable Pressure Settings
- Optional 25 Bar (350psi) Metal Valve
- 3 Port, 2 Port, & 90° Configuration
- Robust, Machined Body Construction
- Multiple Diaphragm Materials
- Wide Range of Valve Body Materials
- ISO 9001 Certified

## Operation:

Griffco diaphragm pressure relief valves operate when the pressure in the chemical system exceeds the preset pressure of the valve. The diaphragm is held against the valve seat by an internal spring. When the preset pressure is exceeded the diaphragm is forced up and the chemical flows out the relief port, back to the chemical tank or to the suction side of the pump. The valves are pre-set at 3.5 bar (50 psi) however they are field adjustable from 1 - 10 bar (10-150 psi) via the adjustment screw. The relief valve should be set approximately 1 bar higher than the system pressure. Installation should be made as close to the pump as possible, without any valves or accessories between the relief valve and the pump. Consult your pump manufacturer for their recommendations.

Griffco's molded Noryl top extends the temperature and pressure rating of the standard valves. New valve designs continue to enhance the performance of chemical feed systems by applying a continuous back pressure to the chemical feed pump, while also acting as an anti-siphon valve. New construction ensures increased reliability in the rigorous service of municipal and industrial applications. Wetted materials include: **PVC, CPVC, PP, PVDF, PTFE, 316 SS, A 20 and Hast. C.** Available sizes: DN8, DN10 and DN15.

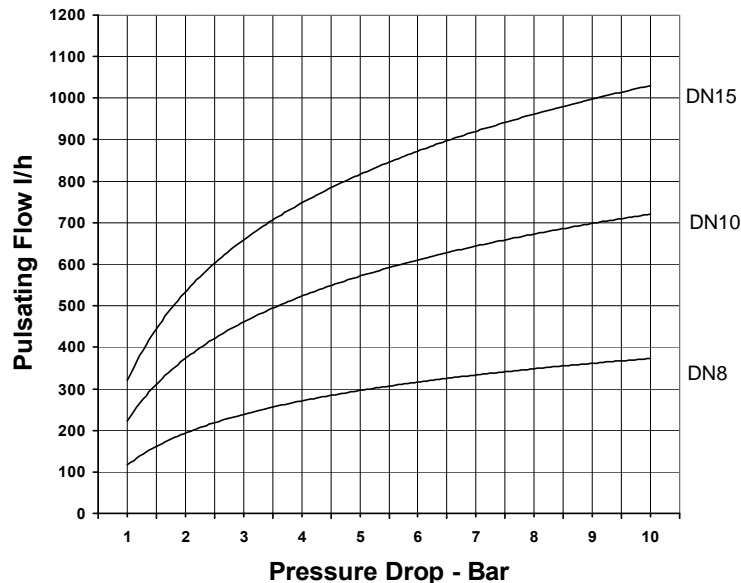
## TYPICAL INSTALLATION



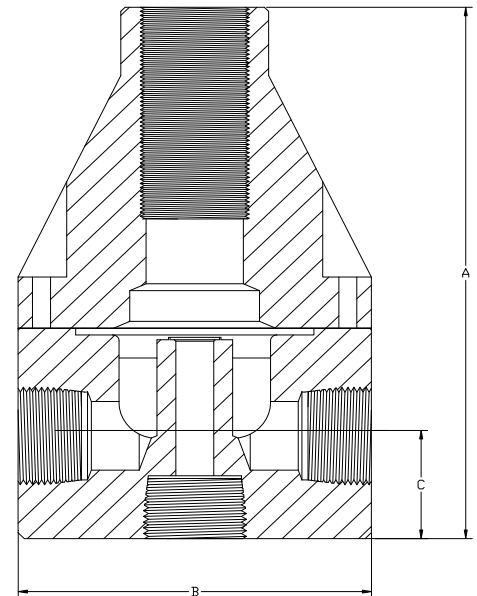
## Technical Data:

Sizes: PRM				DN8, DN10, DN15 and 1/4", 3/8", 1/2"		
Connections:				ISO Thread, Socket and Union		
Pressure Adjustment				Standard: 1 – 10 bar, Optional: 0 – 3.5 bar, 1 – 17 bar, 3.5 – 25 bar Standard: 10 – 150 psi, Optional: 0 – 50 psi, 10 – 250 psi, 50 – 350 psi		
Flow Rates @ 10 bar (150 psi)				Shipping Weight: kgs (lbs)		
Size		Pulsating lph (gph)	Continuous lph (gpm)	Plastic	Metal / Plastic Top	Metal / Metal Top
1/4"	DN8	375 (100)	1135 (5)	0.45 (1)	1.14 (2.5)	1.36 (3.0)
3/8"	DN10	757 (200)	2271 (10)	0.45 (1)	1.14 (2.5)	1.36 (3.0)
1/2"	DN15	1135 (300)	3400 (15)	0.45 (1)	1.36 (3.0)	1.59 (3.5)
Max Temperature: °C (°F)				PVC: 60° (140°); CPVC & PP: 90° (195°); PTFE & PVDF & Metal: 150° (300°), Peak 200° (390°)		
Max Operating Pressure @ 21°C (70°F):				Plastic/Noryl: 25 bar (375 psi), Metal /Metal: 138 bar (2000 psi)		
Materials of Construction:						
Diaphragm				PTFE / EPDM, Optional: Viton, Hypalon, Nitrile, PTFE / Viton		
Valve Top				Standard: Noryl Optional: 316 SS L		
Valve Body				PVC, CPVC, PP, PTFE, PVDF, 316 SS L, A 20, Hast. C, Others on Request		

## Performance Curves:



## Dimensions:



## Product Codes For Ordering:

PRM	<input type="checkbox"/>	<input type="checkbox"/>	<input type="checkbox"/>	<input type="checkbox"/>	<input type="checkbox"/>	<input type="checkbox"/>
PRM2 (2 Port)	1	2	3	4		
1 = Size	2 = Material		3 = Spring Opt Bar (psi)		4 = Options	
025 – 1/4", DN8	P - PVC		Blank - 1-10 (10-150)		Blank – NPT & PTFE/EPDM	
038 – 3/8", DN10	CP - CPVC		1 - 0 – 3.5 (0-50)		V - Viton Diaphragm	
050 – 1/2", DN15	PP - Polypro		2 - 1 – 17 (10-250)		TV – PTFE/Viton Diaph.	
	T - PTFE				B - BSP Connections	
	K - PVDF				S - Socket Connection	
	H - Halar				SD - Metric Socket	
	S - 316 SS				F - Flange Connection	
	A - Alloy 20				FD – Metric Flange	
	C - Hastelloy C				U - Union Connection	
					UD – Metric Union	
					OSS - 316 SS Top	
					MSS - 3-25 (50-350) 316SSL Top	
					AR - Priming Valve	
					90 - 90° Configuration	

DIMENSIONS: PRM - Series			
All Materials		Orifice size = 0.793cm (0.312 in)	
Size	A – cm (in.)	B – cm (in.)	C – cm (in.)
1/4", DN8	9.02 (3.550)	5.97 (2.350)	1.90 (0.750)
3/8", DN10	9.02 (3.550)	5.97 (2.350)	1.90 (0.750)
1/2", DN15	10.8 (4.250)	5.97 (2.350)	2.74 (1.080)

Note: For Optional 2-Port pressure relief valve put "2" after PRM.  
Note: Option MSS is only for use on 316SS, A20, & Hast C Valves.